



### Product Information

Built on itsTRU™ technology, Ebb & Flow Motivate feature two intricate, woven-vinyl surface layers fusion bonded to vulcanized composition rubber (VCR).

Force Reduction  
12.0%

Energy Restitution  
69.0%

### Dimensions

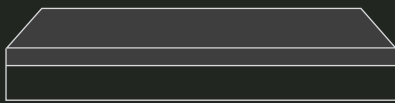
• 6mm x 6' wide rolls

### Applications

- Selectorized Strength
- Cardio
- Common Areas
- Free Weights
- Retail
- Offices

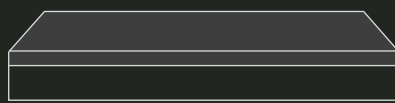
ecore™

You may also be interested in these products:



PERFORMANCE MOTIVATE 7.5MM

2.5mm vulcanized composition rubber surface layer fusion bonded to a 5mm VCR base layer.



HYDROGRIP MOTIVATE 7MM

2mm homogeneous sheet vinyl fusion bonded to a 5mm VCR base layer.



RAGETURF MOTIVATE 17MM

12mm polyethylene turf surface layer fusion bonded to a 5mm VCR base layer.

[Learn more about these and other products at \[ecoreintl.com\]\(#\)](#)

★★ EST. ★★  
**1871**  
ecore

BUILT ON  
**itsTRU**  
TECHNOLOGY

Ecore 715 Fountain Ave, Lancaster, PA 17601 U.S. and Canada: 866-795-2732 [salesupport@ecoreintl.com](mailto:salesupport@ecoreintl.com)

ecore™

Ebb & Flow Motivate Woven Vinyl

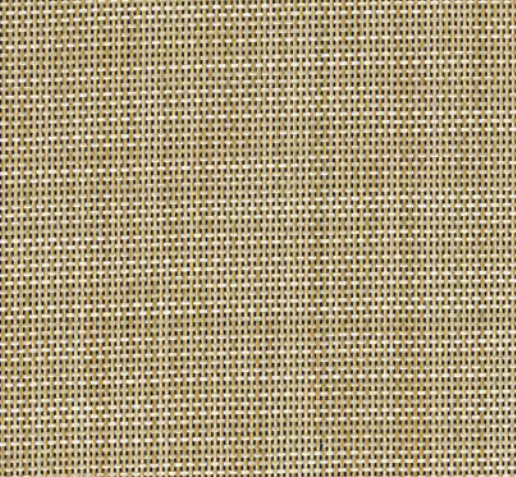
ecore™

# Ebb & Flow Motivate

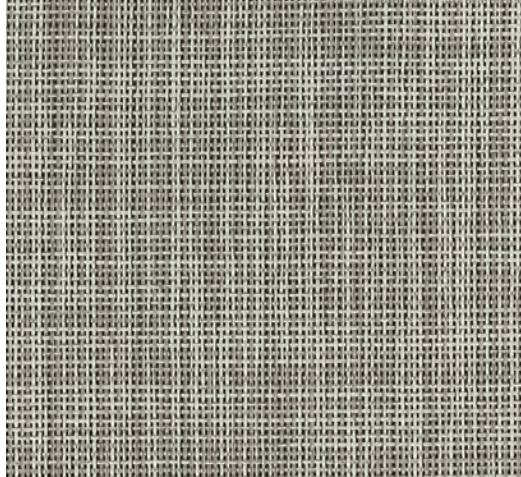
Woven Vinyl



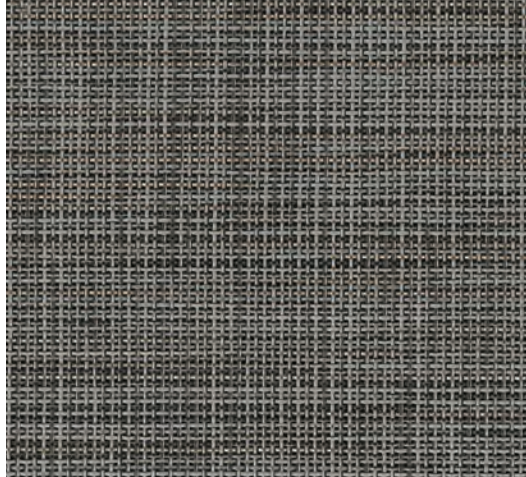
Ebb Colors



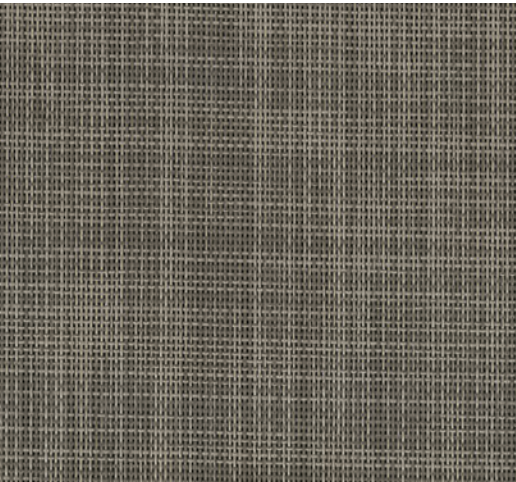
SATIN 325



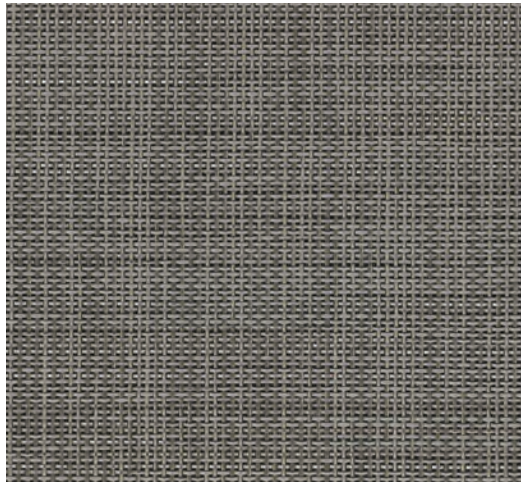
ALABASTER 322



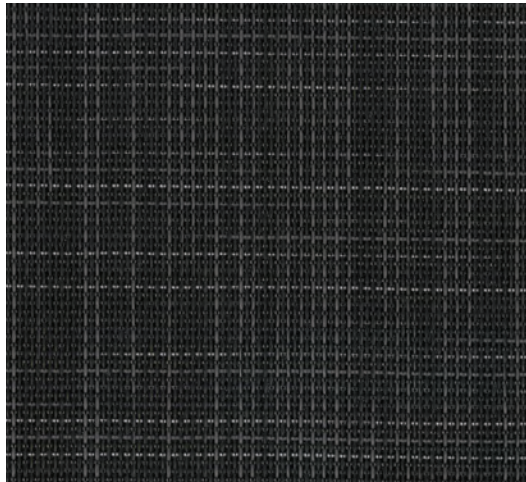
NICKEL 321



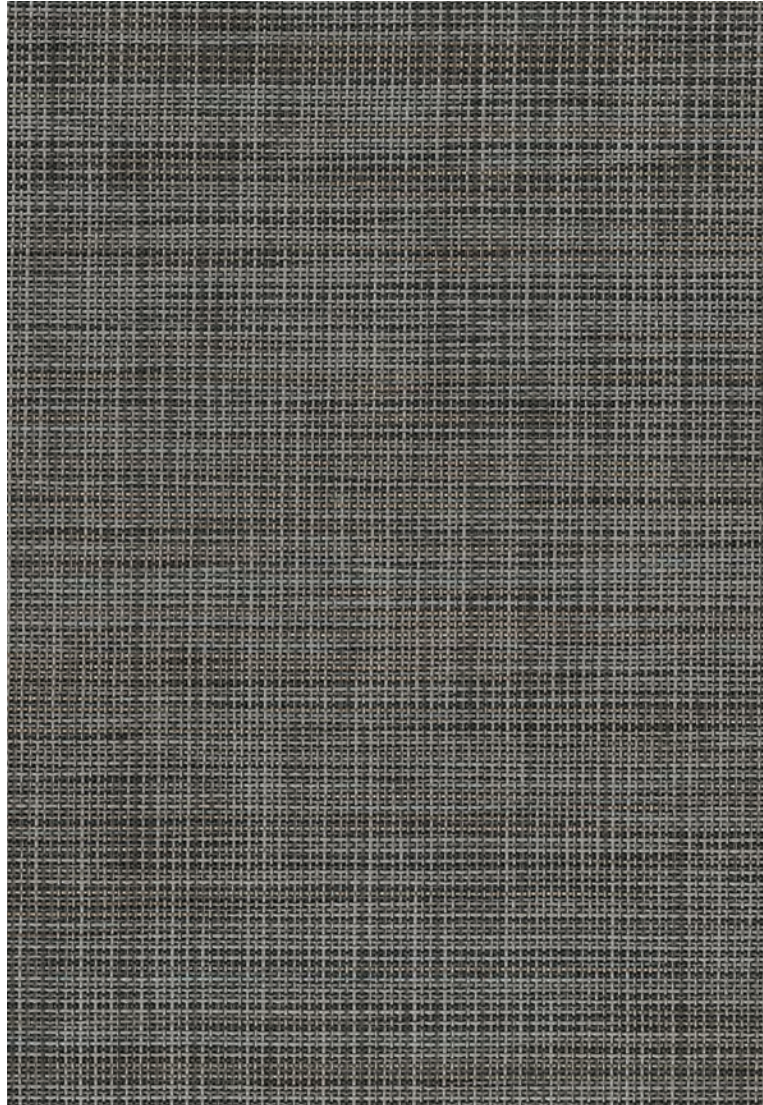
SEPIA 323



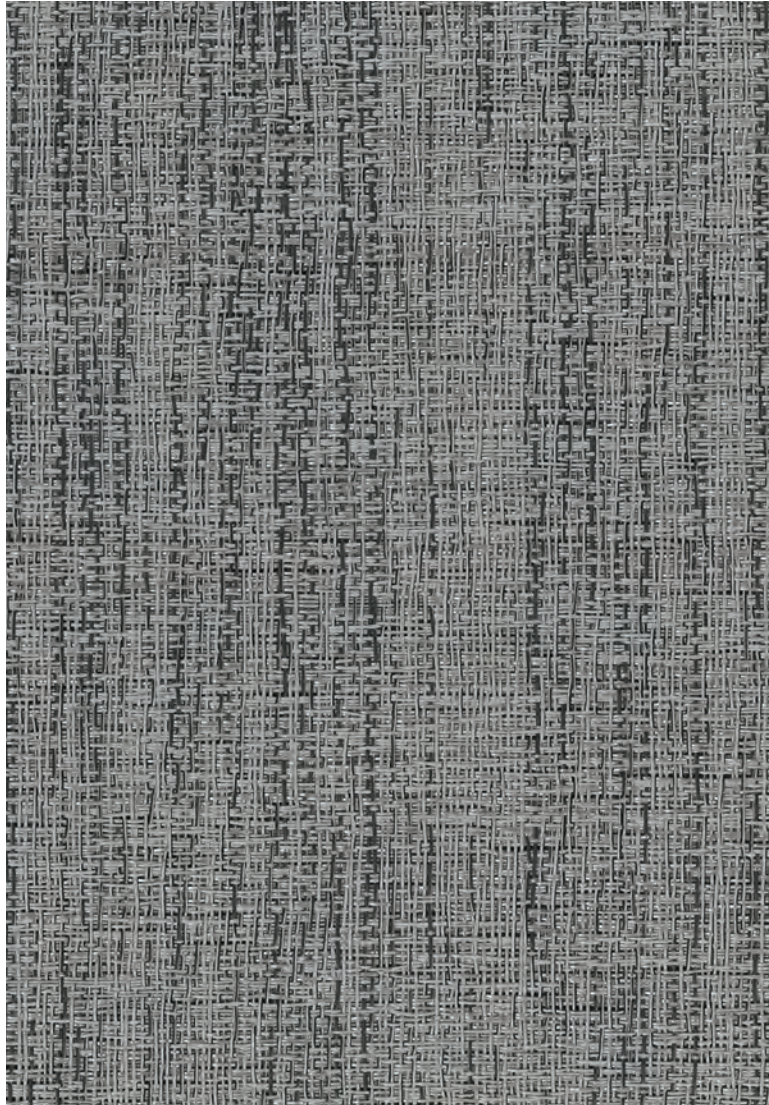
LAVA 324



ONYX 320



EBB MOTIVATE NICKEL 6MM 



FLOW MOTIVATE CADET 6MM 

Flow Colors



BURLYWOOD 305



PARCHMENT 302



CADET 301



RUSSET 303



SONIC 304



RAVEN 300

Actual samples and final product may vary from color swatches shown. For additional information, visit [ecoreintl.com](http://ecoreintl.com).